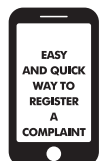


14. The decision of the company is final and binding on all matters arising out of this warranty.
15. This warranty is issued at Delhi, and courts at Delhi shall have exclusive jurisdiction over matters by or following from this warranty. In case of any dispute, arising out of this the same shall be settled by an Arbitrator, In accordance with the provisions of Arbitration and conciliation Act, 1996.

WARRANTY CARD	
Model No	HB-115 <input type="checkbox"/> HB-116 <input type="checkbox"/> HB-117 <input type="checkbox"/>
Serial No.
C.M.No. Date of Sale.....
Owner's Name and Address
AUTHORISED DEALER/FRANCHISEE	

COMPANY'S AUTHORISED PRICE LIST FOR SPARES AVAILABLE WITH SERVICE FRANCHISEE

Bis Website:- <http://www.bis.gov.in>



**MAHARAJA
SERVICE APP**

www.maharajawhiteline.com

Follow us on :

Marketed by:

Groupe SEB India (P) Ltd.

C-67, 3rd Floor,

DDA Sheds, Okhla Phase1, New Delhi-110020, India

Quality Control No. HP / 14 / 001 / 0081

**For customer feedback and complaints,
please contact:**

Service Executive :

Groupe SEB India (P) Ltd.

C-67, 3rd Floor,

DDA Sheds, Okhla Phase1, New Delhi-110020, India

Tel : 011-43684999, 011-33684999, e-mail: maharajacare@groupeseb.com

*'Maharaja Whiteline' is registered trademark of Groupe SEB India Pvt Limited.



ISO 9001:2015
Certified Company

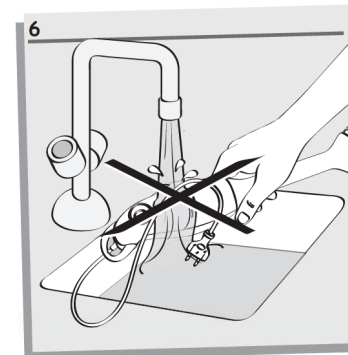
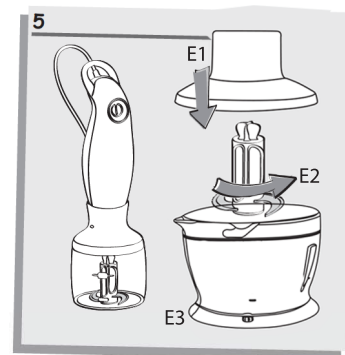
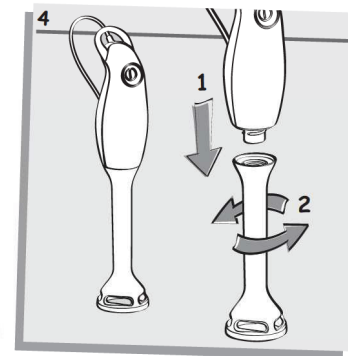
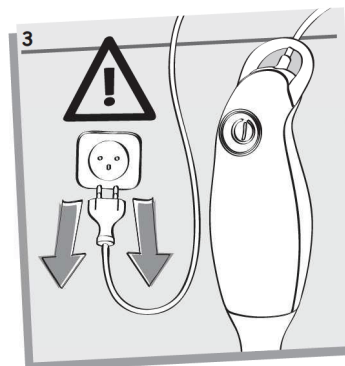
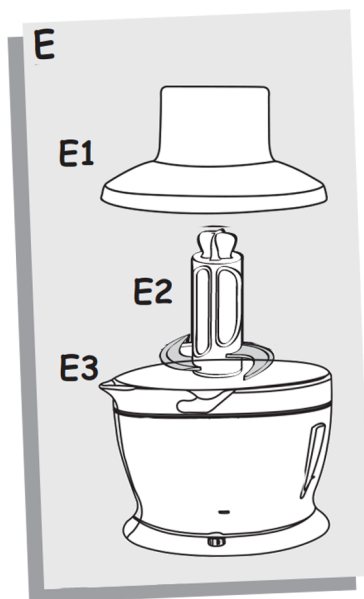
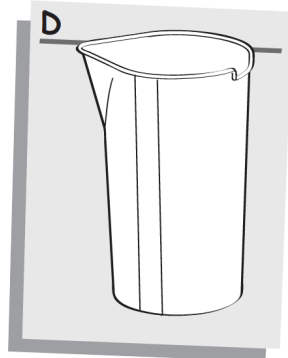
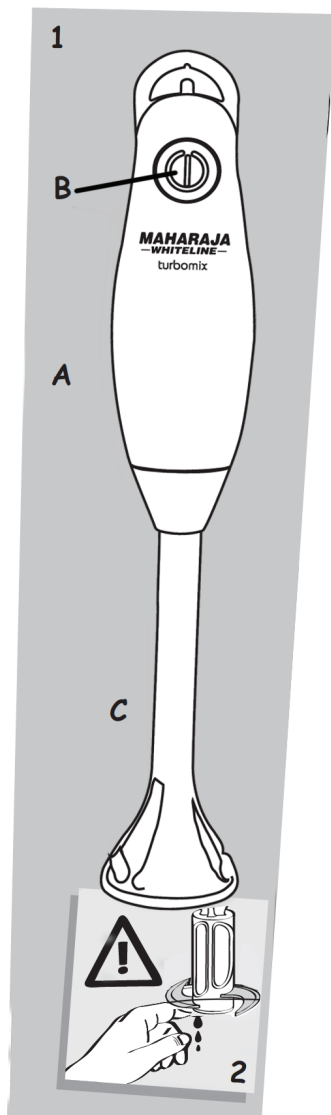
MAHARAJA[®]

—WHITELINE—



turbomix series
Hand Blender

INSTRUCTION MANUAL



Read the instructions carefully before using your appliance for the first time: Liability shall not be accepted for non-complaint use.

DESCRIPTION

A - Motor unit
B - On/Off button
C - Mixer attachment
D - 0.8 L beaker*
1cl = 10ml
E - 500 ml chopper**

E1 - Bowl Cover**
E2 - Chopping Blades**
E3 - Chopping bowl**

SAFETY INSTRUCTIONS

Check that the voltage of your appliance indicated on its rating plate matches that of your electrical installation.

Any incorrect connection invalidates the warranty.

- Always unplug the appliance from the electrical power supply if it is left unattended and when removing accessories or carrying out maintenance. (fig.3) This appliance is not intended for use by persons (including children) with reduced physical, sensory or mental capacities, or lack of experience and knowledge, unless they have been given supervision or instruction concerning use of the appliance by a person responsible for their safety. Children should be supervised to ensure that they do not play with the appliance.
- Do not touch the blade of the mixer attachment when the appliance is plugged in.(fig.2) Ensure that any ties, scarves and long hair do not come into contact with any moving parts of the appliance.
- Always hold the blade of the 500ml chopper(e2) by its support before removing your preparation.
- Do not operate the mixer attachment (c) or the chopper (e) when empty.
- Do not operate the mixer attachment with dry ingredients (walnuts ,hazelnuts)
- Do not use chopper as a recipient and do not pour boiling water into it.
- Do not pull on the power cord to unplug it.
- Children should be supervised to ensure that they do not play with the blender.
- Do not touch the moving parts.
- Do not dismantle the appliance yourself. Simply carry out the usual care and cleaning steps as advised.
- For your safety, use only accessories and spare parts designed for your appliance.
- Care must be taken when handling sharp blades, emptying the bowl or cleaning.

Changing the power cord

If the power cord or the plug is damaged, do not use the appliance. In order to avoid any danger, have them replaced by an approved Maharaja Sevice Centre.

This product has been designed for domestic use only. Any commercial use, inappropriate use or failure to comply with the instructions, the manufacturer accepts no responsibility and the guarantee will not apply.

FIRST USE

Before using for the first time, wash the Plastic foot/Metal foot (C) and all of the accessories in hot water and detergent. Rinse and dry carefully.

Mixer attachment

- Screw the mixer attachment (C) onto the motor unit (A). (fig.4)
- The food ingredients you use must not be filled over 500ml mark of the beaker to avoid overflowing. The preparations must atleast cover the flared bottom of the mixer attachment to ensure that it operates efficiently.
- Remove the food from the source of heat when mixing hot preparations. Do not hesitate to move the mixer attachment (C) around in the food to get optimum results.
- Do not operate the appliance for more than 20 seconds in continuation.
- Place the hand blender shaft in the mixture, immersing only the head , turn the appliance on and leave to blend.
- There is no need to pound the mixture to achieve a good result.

500 ml Chopper

- Before using the 500ml chopper, carefully fit the blade (E2) into the bowl (E3) on the central drive. Put the ingredients in the chopping bowl and fit the cover (E1). Lastly fit the motor unit (A) on it.(fig. 5)
- To remove the accessory after use, remove the motor unit (A) from the cover (E1), then carefully remove the blades (E2) (holding it by the plastic part), then collect the chopped fruits/vegetables.

CLEANING

Always unplug the appliance from the electrical power supply before cleaning.

- Do not immerse the motor unit(A) and Cover(E1)in water. (fig.6) Wipe it with a dry or slightly damp cloth.
- All of the accessories, except motor unit(A) and Cover(E1), can be washed in hot water or the dishwasher.
- Be careful when cleaning the blades (E2), as they are very sharp.

WARRANTY TERMS AND CONDITIONS

The company offers 2 years motor warranty, for repairing or replacing parts, free of cost against defect in manufacturing functional part subject to the following terms and conditions.

1. This warranty is valid only if this card is duly signed and stamped by our dealer and is produced along with the original customer's copy of the purchase bill.
2. Warranty period starts from the date of purchase from our authorised dealer only.
3. The appliance has to be used with all normal care and maintenance and in accordance with instructions for use, recommended by the company, as enumerated in the instruction manual.
4. The appliance should not be repaired, tampered or altered by any agency or person other than an authorised company personnel or their service centres.
5. The Appliances subject to normal wear & tear, misuse, neglect, accident including technical breakdown etc. or non compliance of the instructions given in the instruction manual, improper installation is not covered by this warranty.
6. Plastic Parts, which are breakable, are not covered under this warranty.
- 7.The Appliance is meant for domestic use only.
8. The decision to repair or replacement of parts shall be at the sole discretion of the company. Unless the product part is non-repairable, replacement shall not be provided.
9. Parts repaired or replaced under this warranty are warranted only for the remainder of the original warranty period, that is no fresh warranty period shall commence for the said replace/repaired part.
10. Liability under terms of warranty is limited to the value of the repairs/replacement of the parts found to be defective with in the warranty period. All parts that would have to be replaced shall become the property of the company.
11. The warranty shall not apply to replacement parts such as Carbon Brushes, Lid, Rubber Ring, Coupler, Shaft Blade, Bush Handle & Main Cords.
12. The customer is responsible for bringing the defective product to the service centre/ manufacturer for servicing & collecting the same at his/ her own cost.
13. Under the terms of warranty, installation, free service will be provided only within the municipal limits of the cities/towns where the company has its branches or authorized representatives. Service outside the municipal limits specified above will be provided after charging the actual to and fro traveling and incidental expenses, as prevailing from time to time.